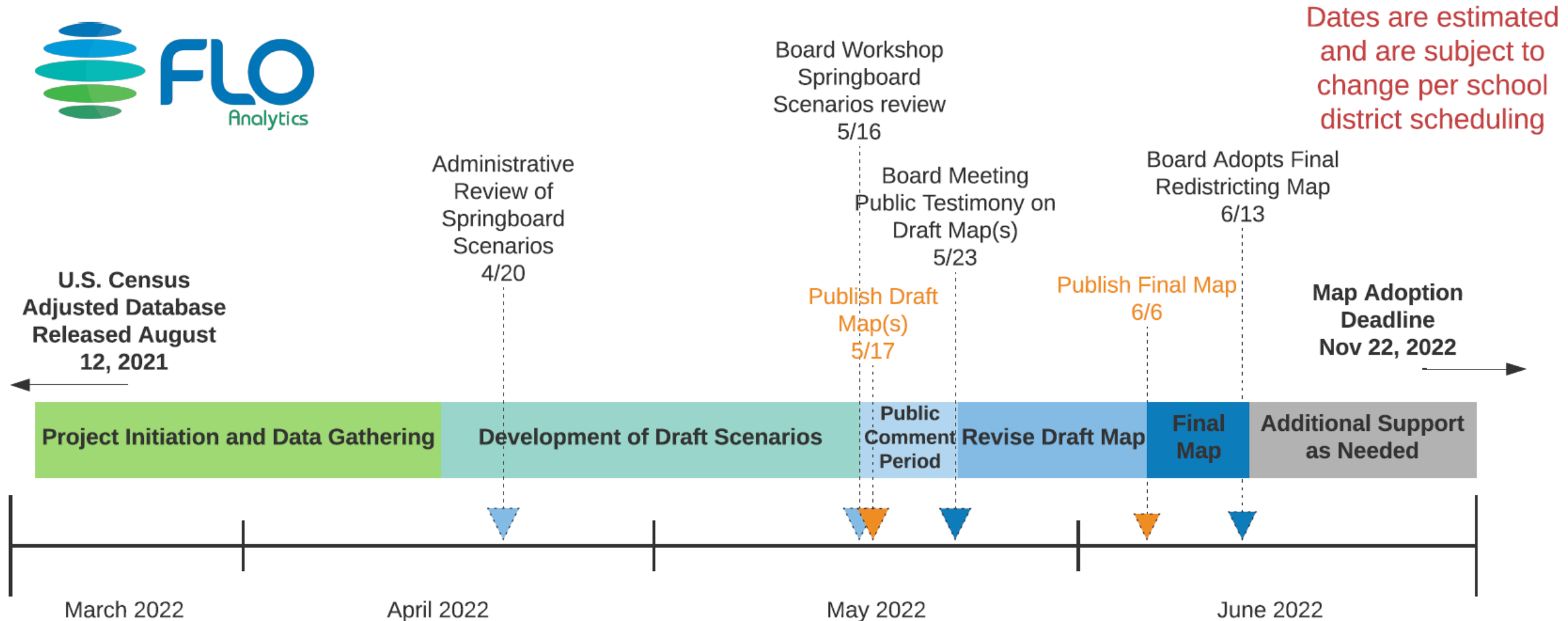


School Board Redistricting Overview

****Please note this process will NOT affect where a student attends school. This process affects School Board Director Districts ONLY, not attendance areas.****



Redistricting Timeline



Please note this process will NOT affect where a student attends school. This process affects School Board Director Districts ONLY, not attendance areas.

Redistricting Requirements

REDISTRICTING CRITERIA

- Districts **must** be population balanced
- Districts **must** be contiguous
- Redistricting **must** be drawn in compliance with all local, state, and federal laws including the Federal Voting Rights Act
- Redistricting **must** not be done to favor or disfavor a protected class or political party
- Districts **should** be as compact as possible
- Districts **should** preserve communities of mutual interest
- Districts **should** preserve the use of existing natural boundaries
- District **should not** split census blocks



****Please note this process will NOT affect where a student attends school. This process affects School Board Director Districts ONLY, not attendance areas.****

****Please note this process will NOT affect where a student attends school. This process affects School Board Director Districts ONLY, not attendance areas.****

Final Map Options

Total Population & Deviation per District

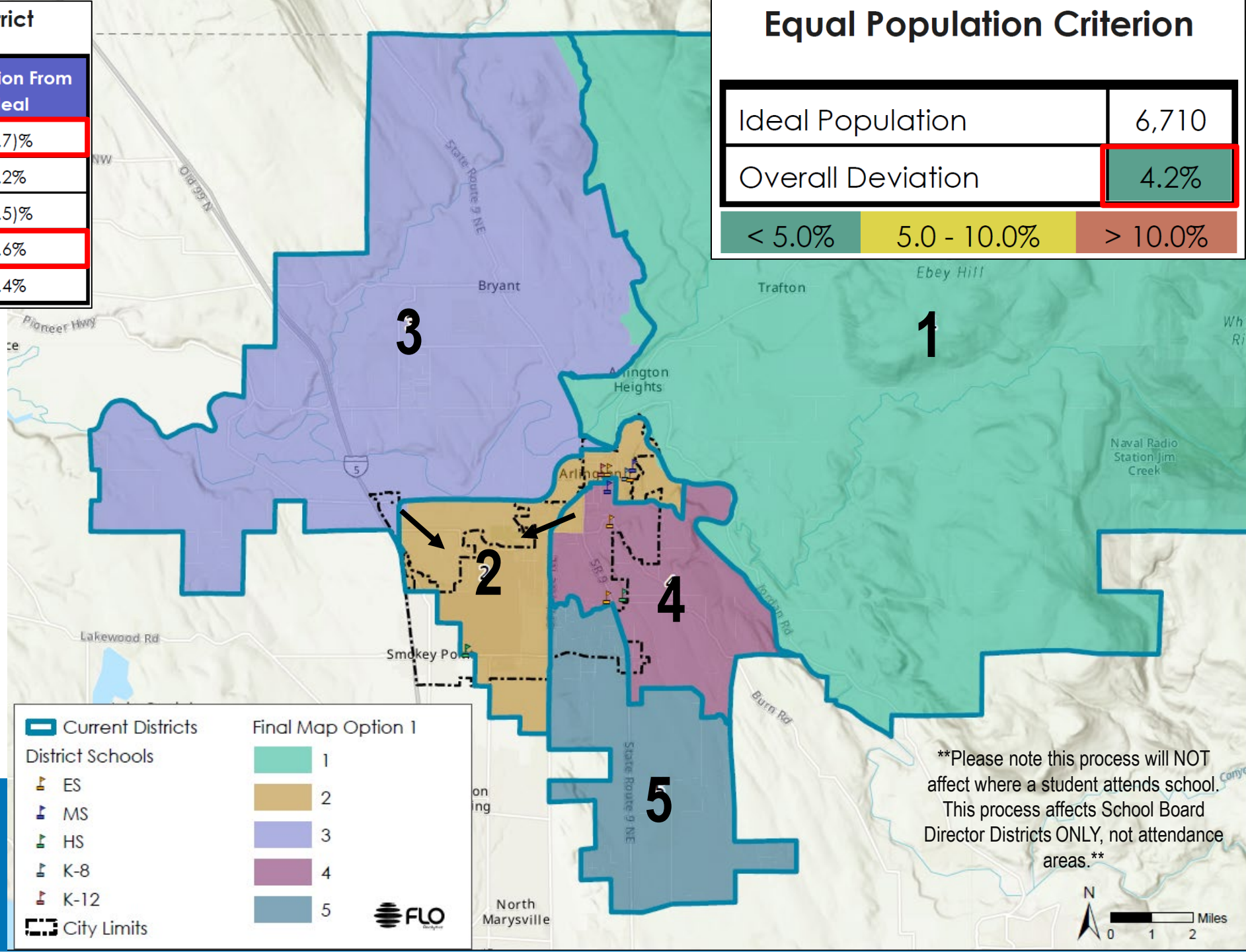
District	Total Population	Over / Under Ideal	Deviation From Ideal
1	6,531	(179)	(2.7)%
2	6,722	12	0.2%
3	6,676	(34)	(0.5)%
4	6,816	106	1.6%
5	6,804	94	1.4%

Equal Population Criterion

Ideal Population	6,710
Overall Deviation	4.2%
<div> <div>< 5.0%</div> <div>5.0 - 10.0%</div> <div>> 10.0%</div> </div>	

Considerations:

- Least change
- Deviation under 5%



****Please note this process will NOT affect where a student attends school. This process affects School Board Director Districts ONLY, not attendance areas.****

Final Map Option 1

Total Population & Deviation per District

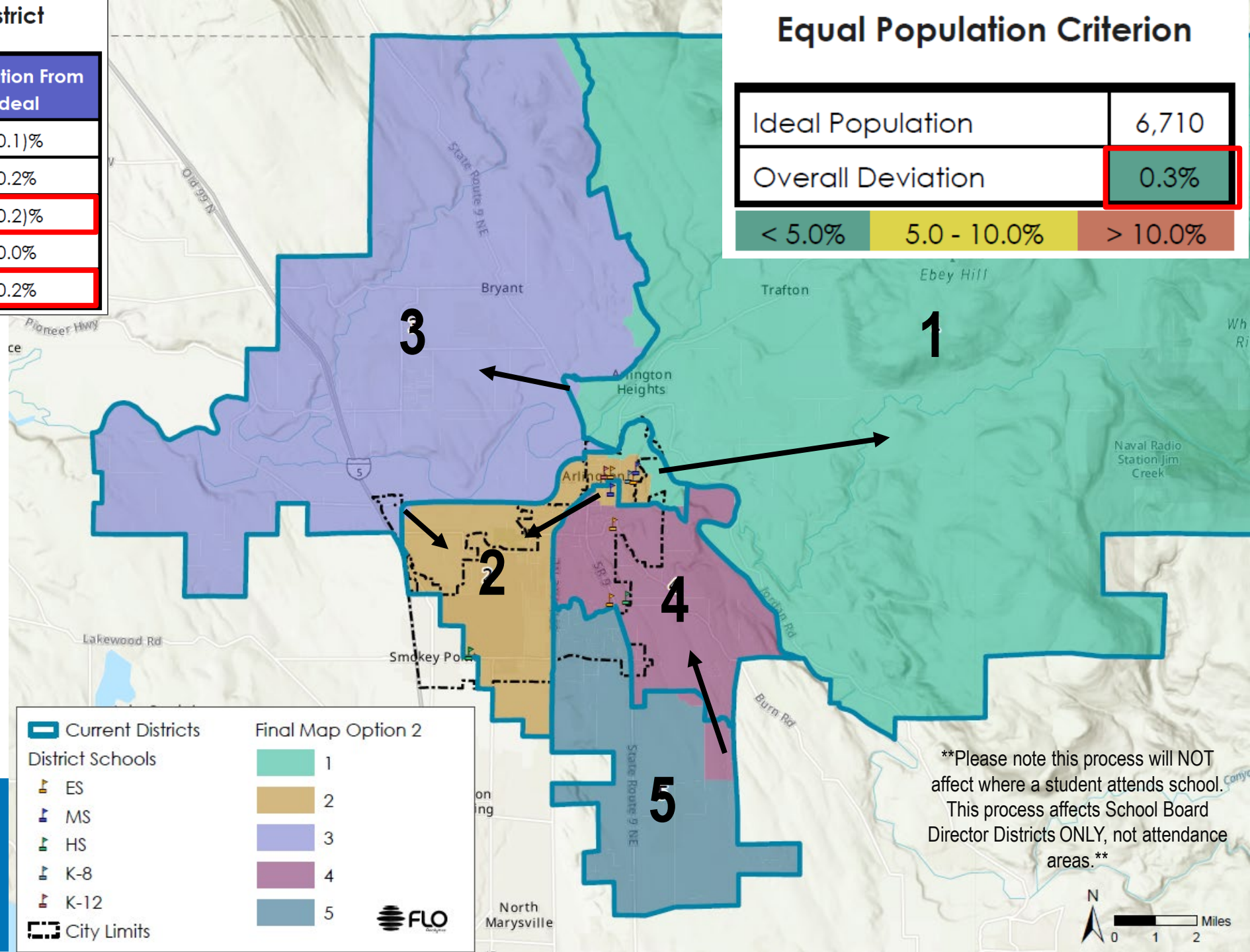
District	Total Population	Over / Under Ideal	Deviation From Ideal
1	6,702	(8)	(0.1)%
2	6,720	10	0.2%
3	6,698	(12)	(0.2)%
4	6,708	(2)	0.0%
5	6,721	11	0.2%

Equal Population Criterion

Ideal Population	6,710
Overall Deviation	0.3%
<div>< 5.0%</div> <div>5.0 - 10.0%</div> <div>> 10.0%</div>	

Considerations:

- Lowest deviation with least amount of change
- Follow artificial and natural boundaries



Final Map Option 2

Total Population & Deviation per District

District	Total Population	Over / Under Ideal	Deviation From Ideal
1	6,637	(73)	(1.1)%
2	6,657	(53)	(0.8)%
3	6,699	(11)	(0.2)%
4	6,788	78	1.2%
5	6,768	58	0.9%

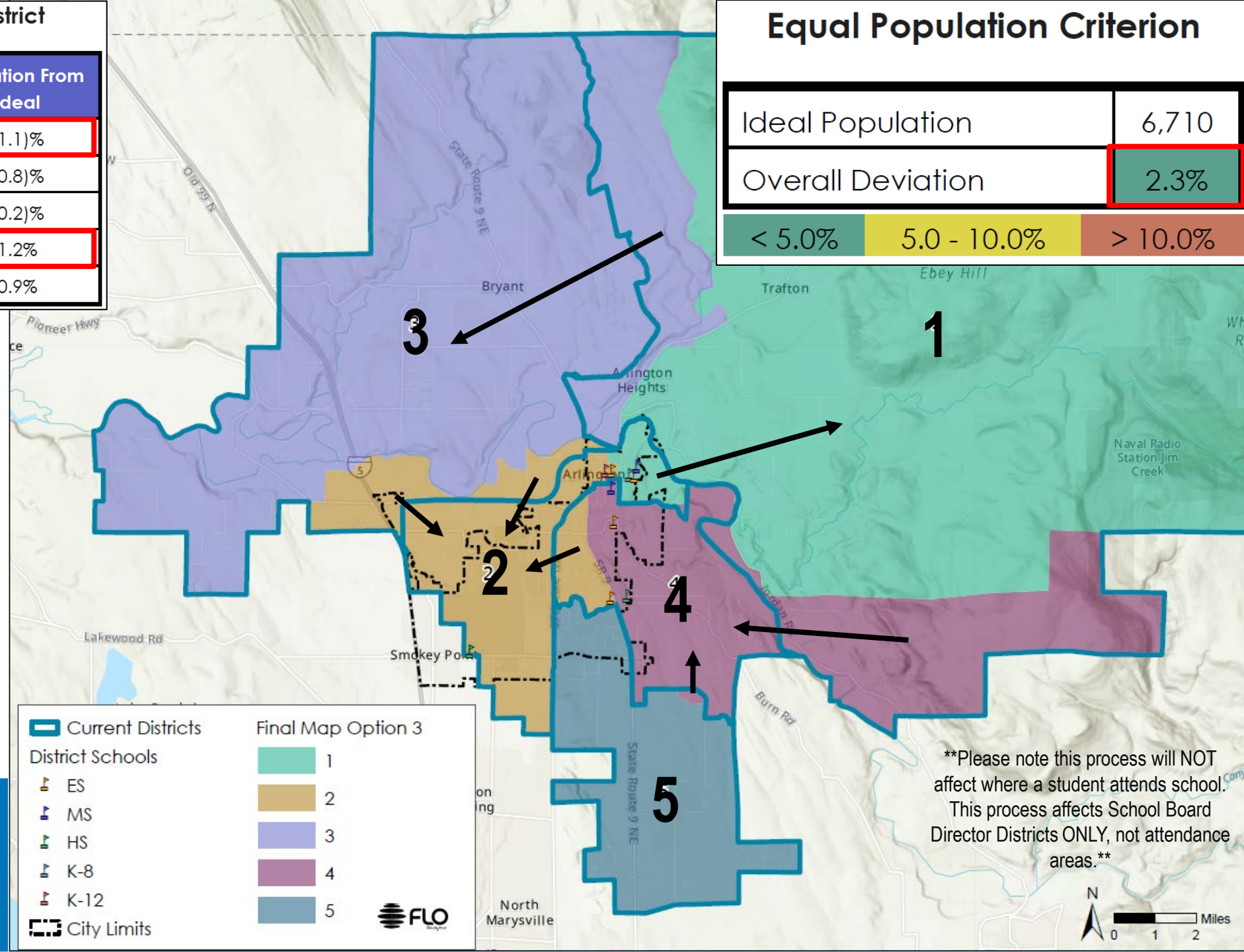
Considerations:

- Compactness
- Reduces number of split districts for Arlington from 5 to 4

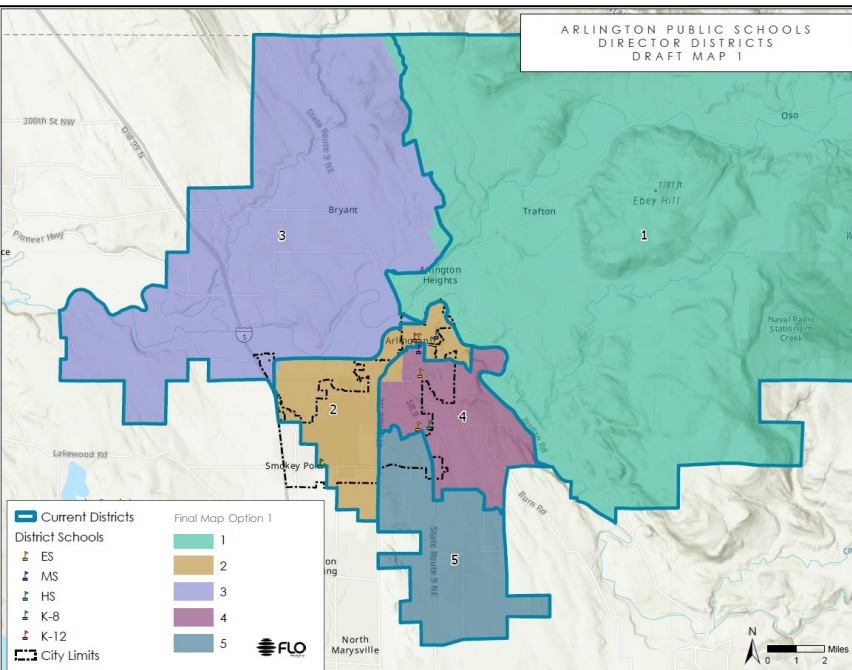
Equal Population Criterion

Ideal Population	6,710	
Overall Deviation	2.3%	
< 5.0%	5.0 - 10.0%	> 10.0%

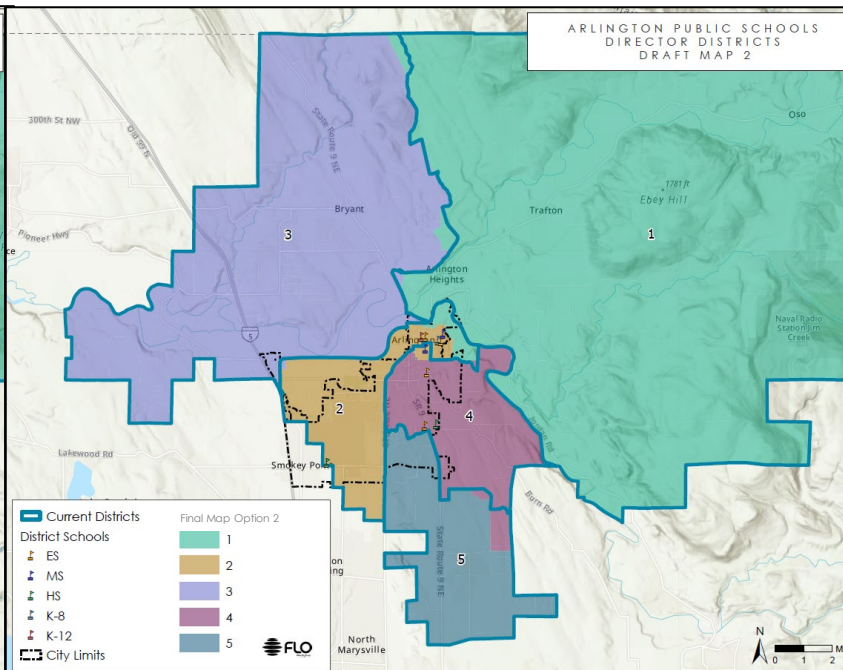
Final Map Option 3



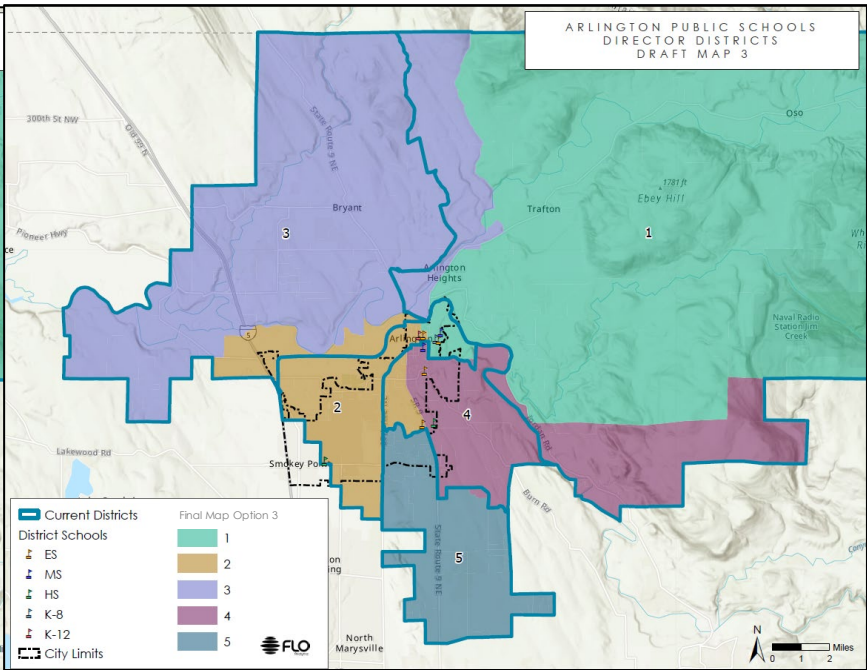
Final Map Option 1



Final Map Option 2



Final Map Option 3



Equal Population Criterion

Ideal Population	6,710	
Overall Deviation	4.2%	
< 5.0%	5.0 - 10.0%	> 10.0%

Equal Population Criterion

Ideal Population	6,710	
Overall Deviation	0.3%	
< 5.0%	5.0 - 10.0%	> 10.0%

Equal Population Criterion

Ideal Population	6,710
Overall Deviation	2.3%

< 5.0%	5.0 - 10.0%	> 10.0%
--------	-------------	---------

Discussion